

Track Harvesters 753JH and 759JH

753JH / 759JH

ENGINE

Gross horsepower @ rated speed
Cylinders
Engine displacement
Maximum net torque @ 1,400 rpm
Additional features

John Deere 6081H, Tier 2, turbocharged
241 SAE hp *180 kW*
6
492 cu. in. *8.1 L*
907 lbf. *1230 Nm*
Cooling system: heavy-duty radiator
Cooling fan: suction type
Air cleaner: two stage, aspirated with safety element

HYDRAULICS

Main pump:
Maximum rated flow
Main attachment pump:
Maximum rated flow
Oil filtration

Variable-displacement axial piston pump
92 gpm *348 L/min*
Dedicated axial piston pump
30 gpm *114 L/min*
Two ten-micron return filters with bypass

CYLINDERS

Bore:
Boom
Arm
Cab levelling

6.00 in. *152 mm*
5.12 in. *130 mm*
N/A / 7.00 in. *178 mm*

Rod diameter:
Boom
Arm
Cab levelling

3.50 in. *89 mm*
3.74 in. *95 mm*
N/A / 4.00 in. *102 mm*

Stroke:
Boom
Arm
Cab levelling

44.50 in. *1130 mm*
50.10 in. *1273 mm*
N/A / 31.30 in. *793 mm*

SWING MECHANISM

Standard features

Rotation: continuous 360 deg.
Swing speed: 7.0 rpm (maximum)
Swing brake: sealed wet multi-disc

UNDERCARRIAGE

Track chain pitch
Travel speed, forward and reverse:
High
Low
Tractive effort
Additional features

8.0 in. *203 mm*
0–2.4 mph *0–3.8 km/h*
0–1.1 mph *0–1.8 km/h*
57,400 lbf. *255 kN*
Carrier slides (per side): two, bolt-on
Track rollers (per side): 8 (tractor type)
Track guides: integral
Track adjustment: hydraulic
Travel brakes: sealed, wet multi-disc, automatic application, integral with track drive gearboxes

753JH / 759JH**CAPACITIES**

Fuel tank	154.0 gal. <i>584 L</i>
Cooling system	10.2 gal. <i>38.5 L</i>
Engine lubrication, including filter	29.5 qt. <i>28 L</i>
Hydraulic reservoir capacity	36.0 gal. <i>136 L</i>
Swing drive gearbox	4.6 qt. <i>4.5 L</i>
Track drive gearbox (each)	5.0 qt. <i>4.8 L</i>

GROUND PRESSURE DATA

As per SAE J1309, less attachment

Double grouser, heavy duty:

24 in. *610 mm*30 in. *760 mm*7.1 psi *49 kPa* / 8.4 psi *58 kPa*5.8 psi *40 kPa* / N/A

Single grouser, clipped corner, heavy duty:

24 in. *610 mm*28 in. *710 mm*7.0 psi *48 kPa* / 8.4 psi *58 kPa*6.1 psi *42 kPa* / 7.2 psi *50 kPa*

Triple grouser, heavy duty:*

36 in. *914 mm*5.0 psi *34 kPa* / N/A**Recommended for soft terrain only.***ELECTRICAL SYSTEM**

Standard features

Type: 24 volt

Alternator: 80 amp

Batteries: dual, heavy duty, low maintenance, with automatic disconnect

Work lights: 8 twin power halogen lights

OPERATING WEIGHTS

Approximate operating weight includes: all standard equipment, 24-in. SG Tracks, 525 lb. *238 kg* half-full fuel tank, all fluids, 175 lb. *80 kg* operator, less attachment

49,400 lb. *22 400 kg* / 59,000 lb. *26 760 kg***HTH616****HTH622B****ATTACHMENT INFORMATION**

Maximum cutting capacity

20.0 in. *500 mm*30.0 in. *762 mm*

Maximum delimiting capacity

20.5 in. *520 mm*25.5 in. *647 mm*

Feeding mechanism

3 rollers, fully synchronized hydraulic drive

3 rollers, fully synchronized hydraulic drive

Dimensions:

Width (arms open)

63.4 in. *1610 mm*68.5 in. *1742 mm*

Width (arms closed)

55.1 in. *1400 mm*58.5 in. *1485 mm*

Height

85.4 in. *2170 mm*96.4 in. *2450 mm*

Weight (with rotator)

3,418 lb. *1550 kg*4,770 lb. *2165 kg**Saw equipped with automatic chain tensioner system.***See individual Harvesting Head brochures for more information.**

753JH

BOOM PERFORMANCE

Maximum reach (to attachment pin):
With standard boom

27 ft. 9 in. 8.5 m

Minimum reach (to attachment pin):
With standard boom

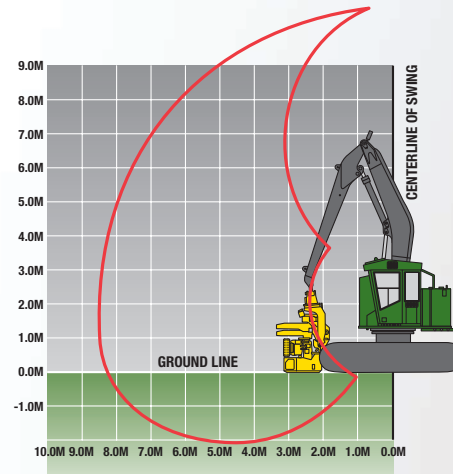
7 ft. 6 in. 2.3 m

Lift capacity (bare pin @ full reach):
With standard boom

8,780 lb. 3980 kg

Lift capacity (bare pin @ 20 ft. 6.1 m):
With standard boom

11,560 lb. 5250 kg



753JH

DIMENSIONS

A Overall height:

Top of cab

11 ft. 4 in. 3.45 m

Top of boom

14 ft. 3 in. 4.33 m

B Overall track length

14 ft. 6 in. 4.42 m

C Track length (idler to sprocket)

11 ft. 8 in. 3.42 m

D Tail swing (from swing center):

Short counterweight

6 ft. 4 in. 1.93 m

Long counterweight

7 ft. 0 in. 2.13 m

E Reach (to attachment pin):

Maximum reach

27 ft. 9 in. 8.48 m

Minimum reach

7 ft. 6 in. 2.30 m

F Ground clearance:

Single grouser

29 in. 740 mm

Double grouser

27 in. 690 mm

Triple grouser

27 in. 690 mm

G Upperstructure width

9 ft. 8 in. 2.94 m

H Track gauge

8 ft. 5 in. 2.57 m

I Width over tracks:

24-in. track pads

10 ft. 5 in. 3.18 m

28-in. track pads

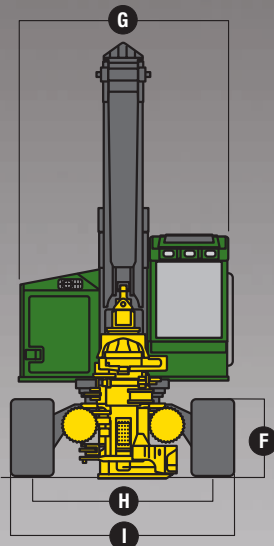
10 ft. 9 in. 3.28 m

30-in. track pads

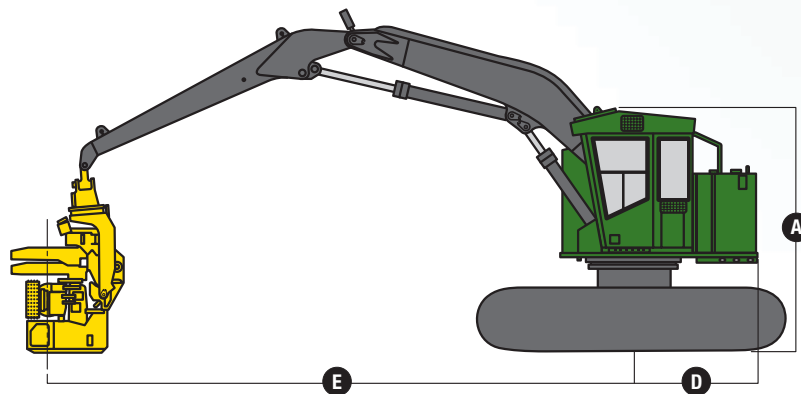
10 ft. 11 in. 3.33 m

36-in. track pads

11 ft. 5 in. 3.48 m



753JH Track Harvester



Machine not exactly as shown. Illustrations for dimensioning purposes only.

759JH

BOOM PERFORMANCE

Maximum reach (to attachment pin):
With standard boom

27 ft. 10 in. 8.5 m

Minimum reach (to attachment pin):
With standard boom

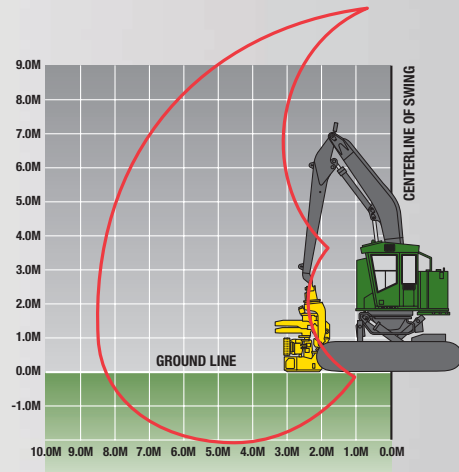
7 ft. 9 in. 2.4 m

Lift capacity (bare pin @ full reach):
With standard boom

8,780 lb. 3980 kg

Lift capacity (bare pin @ 20 ft. 6.1 m):
With standard boom

11,560 lb. 5250 kg



759JH

DIMENSIONS

A Overall height:

Top of cab

12 ft. 10 in. 3.93 m

Top of boom

15 ft. 0 in. 4.57 m

B Overall track length

14 ft. 6 in. 4.42 m

C Track length (idler to sprocket)

11 ft. 8 in. 3.42 m

D Tail swing (from swing center):

Short counterweight

6 ft. 4 in. 1.93 m

Long counterweight

7 ft. 0 in. 2.13 m

E Reach (to attachment pin):

Maximum reach

27 ft. 10 in. 8.50 m

Minimum reach

7 ft. 9 in. 2.37 m

F Ground clearance:

Single grouser

30 in. 762 mm

Double grouser

28 in. 711 mm

G Upperstructure width

9 ft. 8 in. 2.94 m

H Track gauge

8 ft. 0 in. 2.43 m

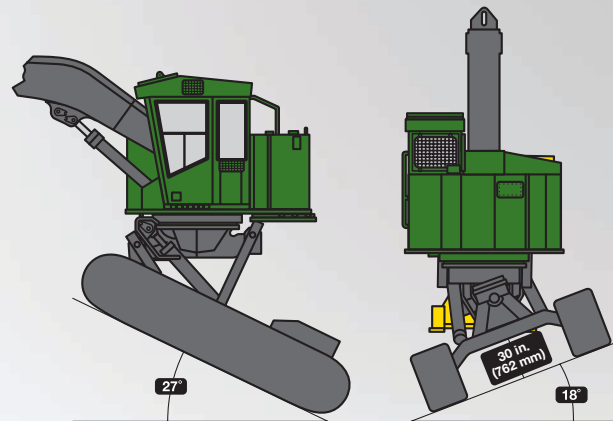
I Width over tracks:

24-in. track pads

10 ft. 0 in. 3.05 m

28-in. track pads

10 ft. 4 in. 3.15 m



Levelling capability:

Foward

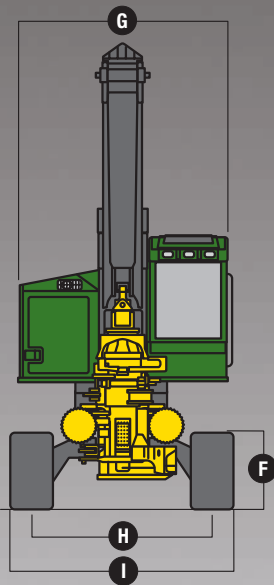
27 deg. (51% slope)

Rear

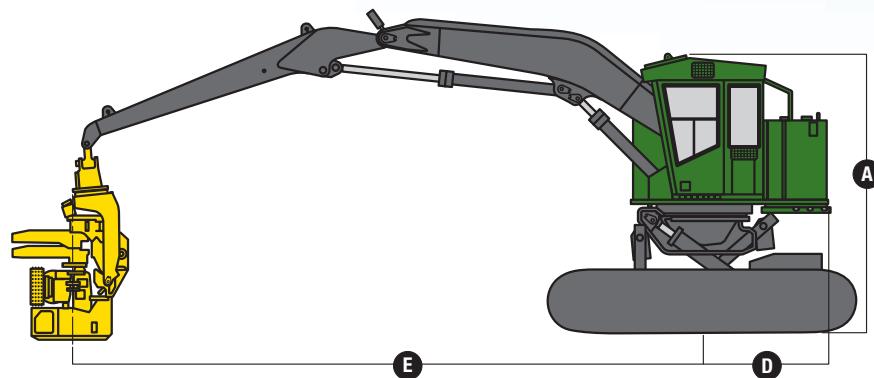
10 deg. (18% slope)

Side-to-side

18 deg. (32% slope)



759JH Track Harvester



Machine not exactly as shown. Illustrations for dimensioning purposes only.