



HARVESTERS

770D 1070D

CUT-TO-LENGTH SYSTEM



HARVESTERS



FORWARDERS





VERSATILE PERFORMANCE FROM JOHN

ENVIRONMENTALLY FRIENDLY CHOICE. RELIABLE HARVESTER HEADS.

FIRST THINNING: 770D.

THINNING TO REGENERATION HARVESTING: 1070D.

The properties of the John Deere 770D harvester make it a suitable choice for first thinning applications and for processing trees with small diameters. The small, four-wheeled 770D moves with agility even in dense forest without damaging the young trees. The sturdy structure and the even weight distribution keep the machine steady in all conditions.

The John Deere 1070D is the right choice for applications where an efficient, versatile harvester is required, from thinning to regeneration harvesting. The wide range of harvester heads, the boom reach of up to 11.3 m and the powerful engine make the 1070D a forest machine that improves productivity even in demanding conditions.

Thanks to the powerful John Deere engine and the hydrostatic drive transmission, the harvester moves effortlessly in any kind of terrain.

CUT-TO-LENGTH SYSTEM

HARVESTERS

FORWARDERS





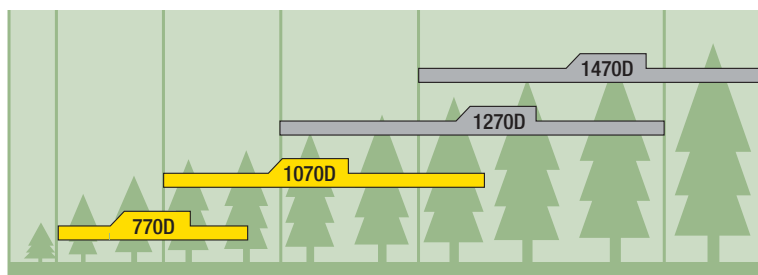
DEERE HARVESTERS.

The stability of the harvester, the low centre of gravity and the efficient frame brake make processing wood smooth and safe.

The fast and accurate parallel booms and the advanced Timbermatic 300 system add the finishing touches to the composition. The ergonomic controls, good visibility in all directions and powerful lights facilitate the operator's work.

The John Deere range of harvester heads includes an optimal head for all harvester applications. The 770D and 1070D comprise the same basic components as all other John Deere forest machines.

Applications of the 770D and 1070D Harvesters



PRODUCTIVITY


UPTIME

LOW DAILY OPERATING COSTS

WELL-KNOWN QUALITY. HIGH UPTIME. EASY

HARVESTERS

770D 1070D



The parallel boom is fast, accurate and easy to control thanks to its logical motion. The boom is easy to maintain. One boom reach length is available.

The efficient hydraulic system makes wood processing effortless. The large diameter hydraulic hoses and pipes reduce pressure loss. The high-grade filter system lengthens the life of the components.

The 2 or 4 roller driven harvester heads H742 and 745 are reliable: various feed rollers and motor options are available, as are colour marking and stump treatment options.

The Windows-based Timbermatic 300 is efficient and easy to use. The properties of the system have been designed with the latest requirements of forest companies and with machine operators in mind.

The cab conforms to safety regulations and provides excellent visibility in all directions. The cab boasts efficient air-conditioning and noise insulation. A CD player / radio is provided. The large windows are made from tinted polycarbonate safety glass and can be equipped with blinds that provide shade from sunlight. The sturdy seat can be adjusted. The cab is also equipped with Halogen/Xenon lights. Optional equipment include a +/- 10 degree sideways tilting function in the cab.

The John Deere PowerTech 4045 HTJ is a diesel engine with good fuel economy and high torque at low rpm. The cooling system for the engine and the hydraulics remains efficient in all conditions. Components that require daily or scheduled servicing are easily accessible.

The engine hood comprises two sections and it is operated by an electrical motor allowing for easy and safe maintenance access. Accessories include electrical refill pumps for fuel and hydraulic oil and a vacuum pump.

The rear axles at the front and the rear are sturdy and reliable. The ground clearance is generous. High tractive force ensures necessary drive in the roughest of terrains.

The frame structure and middle joint are of strong composition. The result is a well-balanced unit with a powerful frame brake. The positioning of the middle joint, the steering angle of +/- 40 degrees and the generous ground clearance make the harvester agile and give it a small turning radius.

The strong belly pan is equipped with spring assistance. Access to all service points is easy and safe.

PRODUCTIVITY. STABILITY. POWER. LOW

John Deere has been developing and manufacturing forest machines for almost 60 years. This experience and expertise is also evident in the design and manufacture of the 770D and 1070D harvesters.



Super-efficient, electrically controlled common-rail fuel-injected John Deere engines achieve high torques of 498 Nm (770D) and 779 Nm (1070D) at very low rpm. This leads to lower fuel consumption and a lengthened life for the components.

The high torque output provides power and speed for harvesting, even under the most demanding conditions.

Thanks to the viscous coupling of the fan in the 1070D, the power of the engine is used for cooling only when necessary.

Long service intervals increase the economy of the machine. For example, the service intervals of engine oil and filters have been extended from 250 hours to as many as 500 hours.

OPERATING COSTS.



The new, extremely accurate feed control based on the Timbermatic 300 provides power and speed for delimiting. The increased working pressure of 28 MPa in the 1070D prevents skidding and improves the quality of work even further.

The anti-skid prevents the feed rollers from slipping and ensures that the harvester head stops in the sawing window with extreme precision. This saves time and negates the need for back-and-forth feeding.

FlashCut™ – the most intelligent saw control system in the market – has been integrated into the Timbermatic 300. FlashCut controls the feeding of the saw bar, keeping the chain and cutting speed at the optimal level at all times thus minimising cracks.

ENJOYABLE OPERATION. STEADY COMFORT.

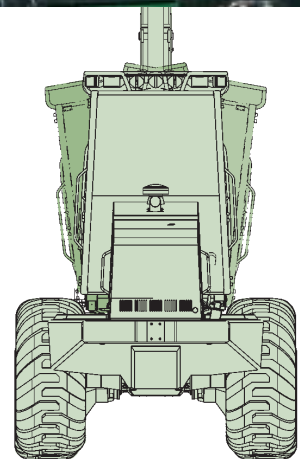
The cab of the John Deere harvesters is a good place for doing productive work. Thanks to the compact structure and large windows of the 770D and the 1070D harvester, visibility is good throughout the working area, even to the treetops. The firm seat and the ergonomically designed controls provide good working conditions for the operator.



The cabs of the harvesters have plenty of room for storing the take-away lunch box.

The comfort of the working environment is further improved by the efficient air conditioning and heating equipment, the cabin air filter, which keeps the interior air of the cab fresh and clean and the optional sun blinds.

The optional function, which tilts the cab sideways, improves the working conditions even further. The tilt angle is +/- 10 degrees and the motion can be controlled either automatically through the Timbermatic 300 system or by manual control. When set on automatic control, the tilting of the cab follows the slopes of the terrain, thus improving working conditions in uneven terrain.



PRODUCTIVE INFORMATION MANAGEMENT.



In addition to volumes and measurements, the PC-based Timbermatic 300, which runs on a Windows operating system, collects information on the location of produced timber, which can be sent to the forwarder or the factory in order to optimise transportation. Starting a new site is easy. Map information, as well as site and felling instructions, is transferred directly to the system via a wireless connection.

Thanks to the new stem profile prediction calculation and verification graphics, the measuring and optimisation accuracy of the Timbermatic 300 is excellent and calibration is effortless. The system records a wide variety of production, location and machine data and it features a wireless data transfer function, a large colour display and several external interfaces.



The Timbermatic 300 features a versatile fault diagnostics function and the system issues reminders of scheduled maintenance services. The reports can be printed out as A4 size sheets.



REACH. HANDLING. QUALITY. ACCURACY.

The parallel booms of John Deere harvesters are efficient and effective. They are easy to control thanks to the minimum-effort control levers and the comprehensive Timbermatic 300 system. The ability to save operator-specific settings in the memory of the system speeds up changes between operators as well as the implementation of different operating speeds.

4 roller drive	745	H754
770D/140H	7.9 m	-
1070D/180S	8.3/9.7/11.0 m	8.3/9.7 m

2 roller drive	H742	H752
770D/140H	7.9 m	-
1070D/180S	8.3/9.7/11.0 m	8.3/9.7 m

Boom Reach and Harvester Heads

The reliable harvester heads enable the best possible production in different conditions. The feed rollers and harvester head motor can also be selected from a variety of alternatives. Fast and uninterrupted feeding combined with high cutting and delimiting accuracy ensures high-quality results.



The strongly built parallel booms are positioned on the front frame of the machine practically parallel to the field of vision of the operator. This allows for smooth and natural controlling of movements in all directions. The boom can be tilted backwards by 15 degrees and forwards by 15 degrees (770D) or 23 degrees (1070D), either manually or automatically. The automatic tilting feature improves working in demanding conditions.

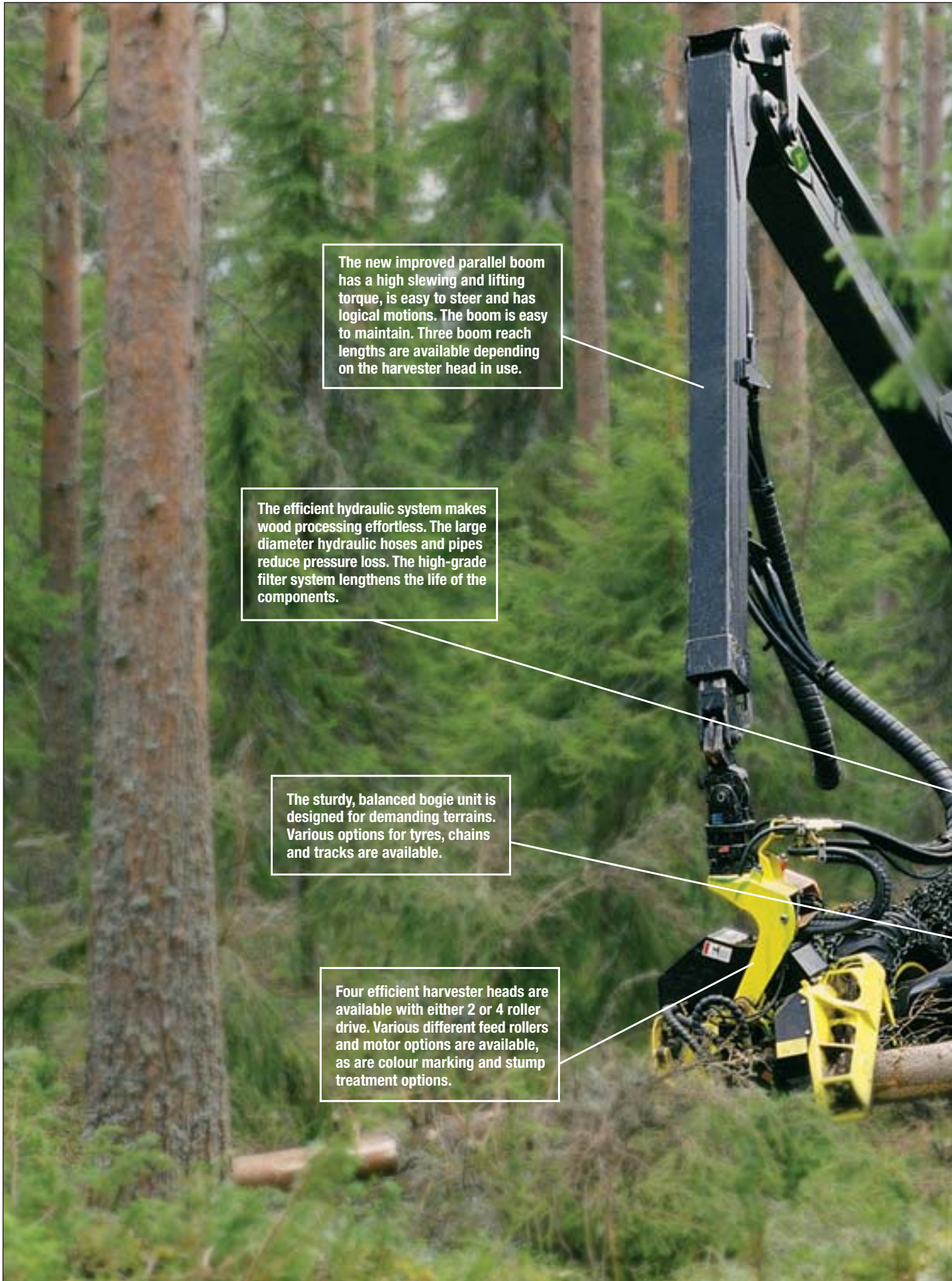
The reach length of the 140 H boom of the 770D harvester is 7.9 metres. The new super-powerful 180S boom makes the 1070D especially suited for handling trees in later thinning applications. The 180S boom is available with three different reach lengths.



HIGH UPTIME. EASY MAINTENANCE. STURDY

HARVESTERS

770D 1070D



The new improved parallel boom has a high slewing and lifting torque, is easy to steer and has logical motions. The boom is easy to maintain. Three boom reach lengths are available depending on the harvester head in use.

The efficient hydraulic system makes wood processing effortless. The large diameter hydraulic hoses and pipes reduce pressure loss. The high-grade filter system lengthens the life of the components.

The sturdy, balanced bogie unit is designed for demanding terrains. Various options for tyres, chains and tracks are available.

Four efficient harvester heads are available with either 2 or 4 roller drive. Various different feed rollers and motor options are available, as are colour marking and stump treatment options.

The Windows-based Timbermatic 300 is efficient and easy to use. The properties of the system have been designed with the latest requirements of forest companies and with machine operators in mind.

The cab conforms to safety regulations and provides excellent visibility in all directions. The cab boasts efficient air-conditioning and noise insulation. A CD player / radio is provided. The large windows are made from tinted polycarbonate safety glass and can be equipped with blinds that provide shade from sunlight. The sturdy seat can be adjusted. The cab is also equipped with Halogen/Xenon lights. Optional equipment include a +/- 10 degree sideways tilting function of the cab.

The John Deere PowerTech 6068 HTJ is a diesel engine with good fuel economy and high torque at low rpm. The cooling system for the engine and the hydraulics remains efficient in all conditions. Components that require daily or scheduled servicing are easily accessible.

The engine hood comprises two sections and it is operated by an electrical motor allowing for easy and safe maintenance access. Accessories include a diesel heater, electrical refill pumps for fuel and hydraulic oil and a vacuum pump.

The rear axles are sturdy and reliable. The ground clearance is generous. High tractive force ensures necessary drive in the roughest of terrains.

The strong belly pan is equipped with spring assistance. Access to all service points is easy and safe.

The frame structure and middle joint are of strong composition. The result is a well-balanced unit with a powerful frame brake. The positioning of the middle joint, the steering angle of +/- 40 degrees and the generous ground clearance make the harvester agile and give it a small turning radius.

TECHNICAL DATA 770D 1070D

	770D	1070D
DIESEL ENGINE	John Deere 4045 HTJ	John Deere 6068 HTJ
Power Output [kW] @ [rpm]	86 @ 2,000	129 @ 2,000
Torque [Nm] @ [rpm]	498 @ 1,400	779 @ 1,400
Fuel Tank [l]	250	300

	Hydrostatic-mechanical 2-speed Gearbox	
Speed, mode 1 [km/h]	0 - 8	0 - 7
mode 2 [km/h]	0 - 25	0 - 24
Tractive Force [kN]	100	130

	Proportional Frame Steering	
STEERING		
Steering Angle	40	40

BRAKES Service and working brakes are hydraulically actuated, oil-immersed multi-disc brakes.
Spring-actuated parking and emergency brakes. ISO 11169.

	Hydro-mechanical differential lock at the front and the rear	
AXLES/BOGIE		
Front	Rigid axles	Balanced gear bogie axles
Rear	Rigid axles	Rigid axles

ELECTRICAL SYSTEM		
Voltage	24V	24V
Batteries	2 x 140 Ah	2 x 140 Ah
Alternator	140 A	140 A
Working Lights	14 Twin Power and 4 single lamps on the boom 30 lux in the working area of the boom Xenon lights also available	

	Load-sensing, pressure compensated	
HYDRAULICS		
Pump Volume [cm ³]	130	145
Working Pressure [Mpa]	24	24 / 28
Hydraulic Tank [l]	170	170

BOOM	140H	180S
Maximum Reach Lengths [m]	7.9	8.9 / 9.7 / 11.0
Gross Lifting Torque [kNm]	95	143
Slewing Torque [kNm]	24	38
Tilt Angle [°]	+/- 15	-15 +23
Slewing Angle [°]	220	220

	Safe and in conformity with ISO standards. Standard: Fixed Cab Option: Rotating and Levelling Cab	
CAB		
Sideways Tilt	10	10

	770D	1070D
MEASURING AND CONTROL SYSTEM	PC/Windows-based Timbermatic 300	
HARVESTER HEADS	H742, 745	H742, 745, H752, H754
OPTIONAL EQUIPMENT	Further information on the equipment is available from your local dealer.	

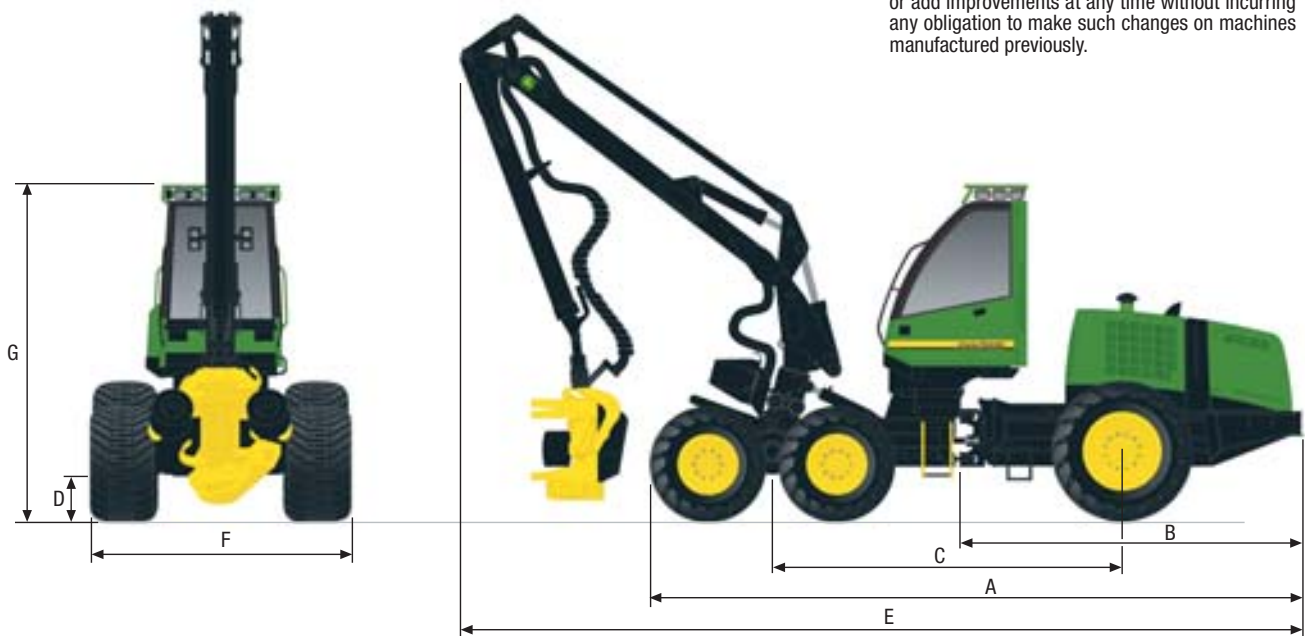
MEASUREMENTS [mm] *

A Length	5,910	6,710
B Rear Section	3,405	3,733
C Wheelbase	3,500	3,500
D Ground Clearance.....	570	575
E Estimated Transportation Length	9,740	10,816
F Width, Front		
- 18.4 Tyres	2,257	-
- 600 Tyres	2,450	2,530/2,640
- 650 Tyres	2,400	-
- 700 Tyres	-	2,670/2,790
Width, Rear		
- 18.4 Tyres	2,257	-
- 600 Tyres	2,450	-
- 650 Tyres	2,400	2,620
- 750 Tyres	-	2,700
G Height - Fixed Cab	3,620	3,620
- Levelling Cab.....	3,690	3,690

* Note! The measurements are nominal and may vary depending on the manufacturing tolerances.

WEIGHT [kg]

Depending on Accessories	11,550	14,100
--------------------------------	--------	--------



The manufacturer reserves the right to make changes or add improvements at any time without incurring any obligation to make such changes on machines manufactured previously.

HARVESTERS

770D 1070D



NOTHING RUNS LIKE A DEERE.

MAYBE THOSE WORDS ARE THE REASON WHY ALMOST EVERY OTHER PROFESSIONAL LOGGER IS A JOHN DEERE CUSTOMER.

They're just five simple words. Yet they have profound impact on your company. Because at their heart they mean equipment that is built forest tough, with greater productivity, more uptime and lower daily operating costs. They mean a dealer network over 380 locations strong, with immediate access to parts and experts that understand your industry. They mean a dedicated lender in John

Deere Credit, committed to helping loggers succeed with competitive financing to enhance cash flow. And they mean a global forestry equipment leader that invests more in R & D than any other manufacturer.

But most of all, these words represent the confidence that comes with over 168 years of heavy equipment experience.

Your world is logging. So is ours. John Deere Forestry. Leading the way, worldwide.

FULL TREE SYSTEM

CUT-TO-LENGTH SYSTEM

PRODUCTIVITY | UPTIME | LOW DAILY OPERATING COSTS

www.JohnDeere.com

John Deere Forestry Ltd.
Unit 6, Grove Industrial Estate
Castleside Road, Consett
County Durham. Great Britain.
Tel. (0) 1207 583 610
Fax (0) 1207 583 607

John Deere Forestry Ltd.
Ballyknocken
Glenealy
Co. Wicklow. Ireland.
Tel. (0) 404 44969
Fax (0) 404 44972

