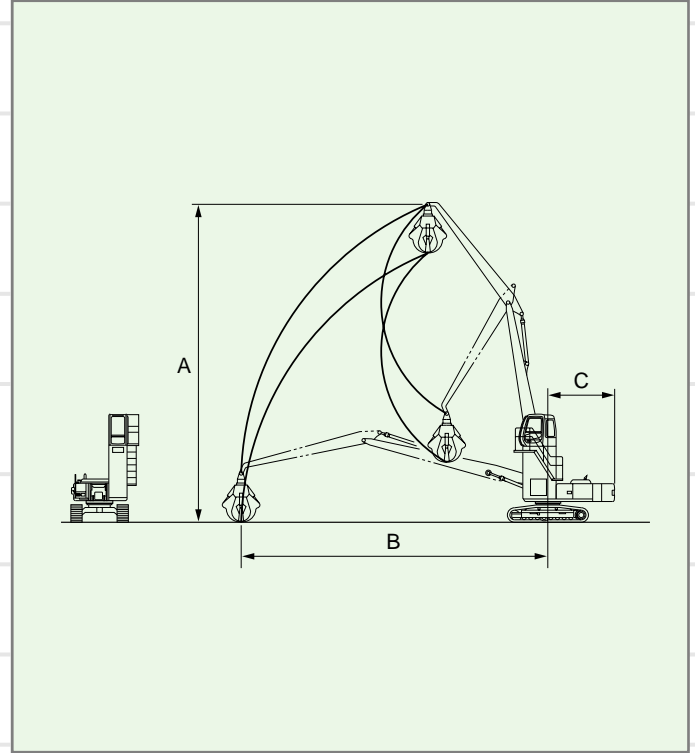


Scrap Handling Machine

Mobile capability for high-efficiency operations

- Long arm and boom mounted for wider working ranges and increased work efficiency.
- The high-mount cab provide good visibility.
- Either fork grapple or orange grapple can be chosen according to the kind of scrap handled.

Working Range Diagram



Specifications

Applicable Models		ZX230LC	ZX330LC	ZX450	ZX600
Type		S-SC220	S-SC300	S-SC400	S-SC550
Grappling capacity		kg	2 000	2 200	2 900
A	Max. working height	mm	14 000	15 300	18 350
B	Max. working radius	mm	12 000	14 000	18 200
C	Rear-end swing radius	mm	3 210	3 730	4 180
Operating weight		kg	29 000	36 800	51 900

<Note> Some models other than the above are applicable.