

ZR series

HITACHI

ZR950JC

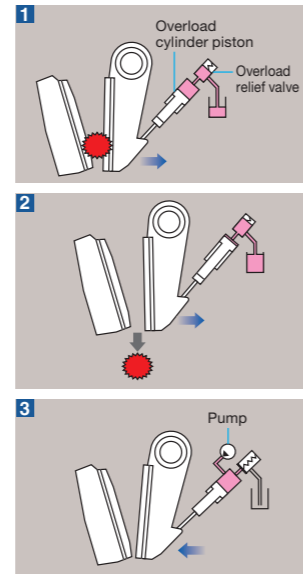
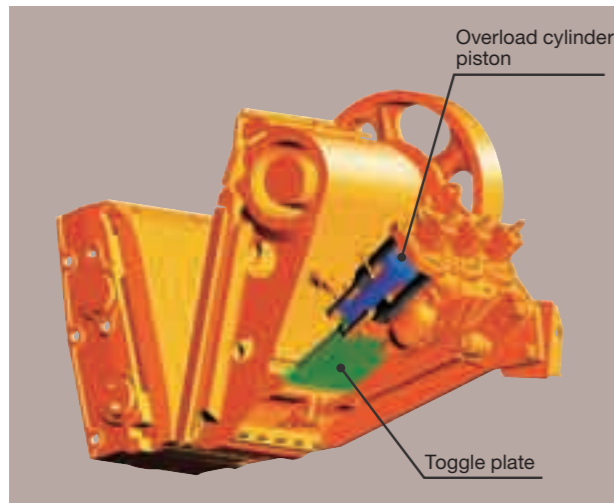


TRACK MOUNTED CRUSHER

- Model Code : ZR950JC
- Engine Rated Output : 140 kW (190 PS)
- Operating Weight : 29 800 kg (Including Magnet Separator)

Reduced Downtime with Technological Breakthroughs

Advanced Crusher Protection Mechanism



New Self-Restoring Function

Uncrushable material, blocked in the crushing chamber, can be automatically discharged without interrupting operation.

1 If uncrushable material is blocked in the crushing chamber, the overload cylinder piston is retracted automatically.

2 The crushing chamber outlet widens to discharge uncrushable material.

3 Then, the chamber outlet is returned automatically to the preset width by delivering pressure oil from pump to overload cylinder piston.

New Crusher Protection Mechanism

With the new hydraulic crusher protection mechanism, downtime can be greatly reduced if uncrushable material is fed into crushing chamber.



Simple Maintenance

Easy Access to Crusher Bottom

An ample space (approx. 500 mm) is provided between crusher bottom and main conveyor for smooth conveying of steel bar, etc. This new design also gives easy access to the crusher bottom from four locations (one access hatch at platform center, and three openings at conveyor tail and both track frame sides) as needed.



1 Access hatch at platform center



2 Opening at conveyor tail



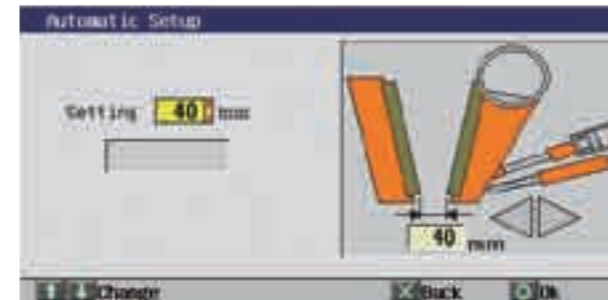
3 Opening at track frame side (with cover removed)

Access Ladder for Maintenance

Folding access ladders are provided on both sides of the machine for the convenience of servicing and inspection, including filter replacement.

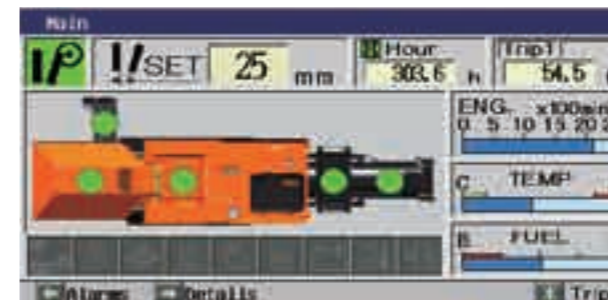


Excellent Controllability



Simple Adjustment through Multi-Function Monitor

Discharge chamber setting can be easily reset by inputting the required figure on the monitor panel.



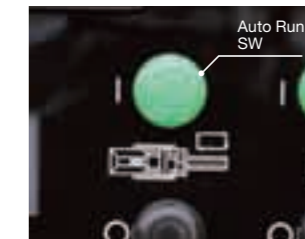
Multi-Function Monitor

Implements, meters and alarms can be monitored and controlled through a 7-inch multi-function color LCD monitor on the main control panel.



Dual Operation Stations

All control switches except travel switches are concentrated on the main control panel on the side of the machine for easy control by the operator standing on the ground. In addition, the crusher and feeder are controllable from the control panel on the side of the crusher.



One-Touch Starting

The new auto run switch is added for auto starts and stops of each implement.

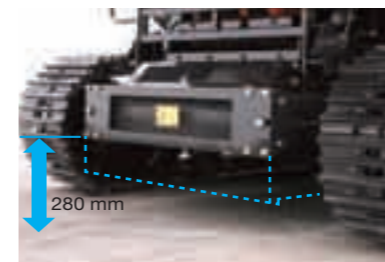


Wired Remote Controller

The ZR950JC comes standard with a wired remote controller for easy control and safety.

Enhanced Mobility

The conveyor can be lifted to give 280 mm ground clearance for easy job-to-job travel within job sites with obstacles.



Discharge Height of Main Conveyor 2 970 mm

Ample conveyor discharging height can extend loading cycle times, and ease loading operation.

2 970 mm

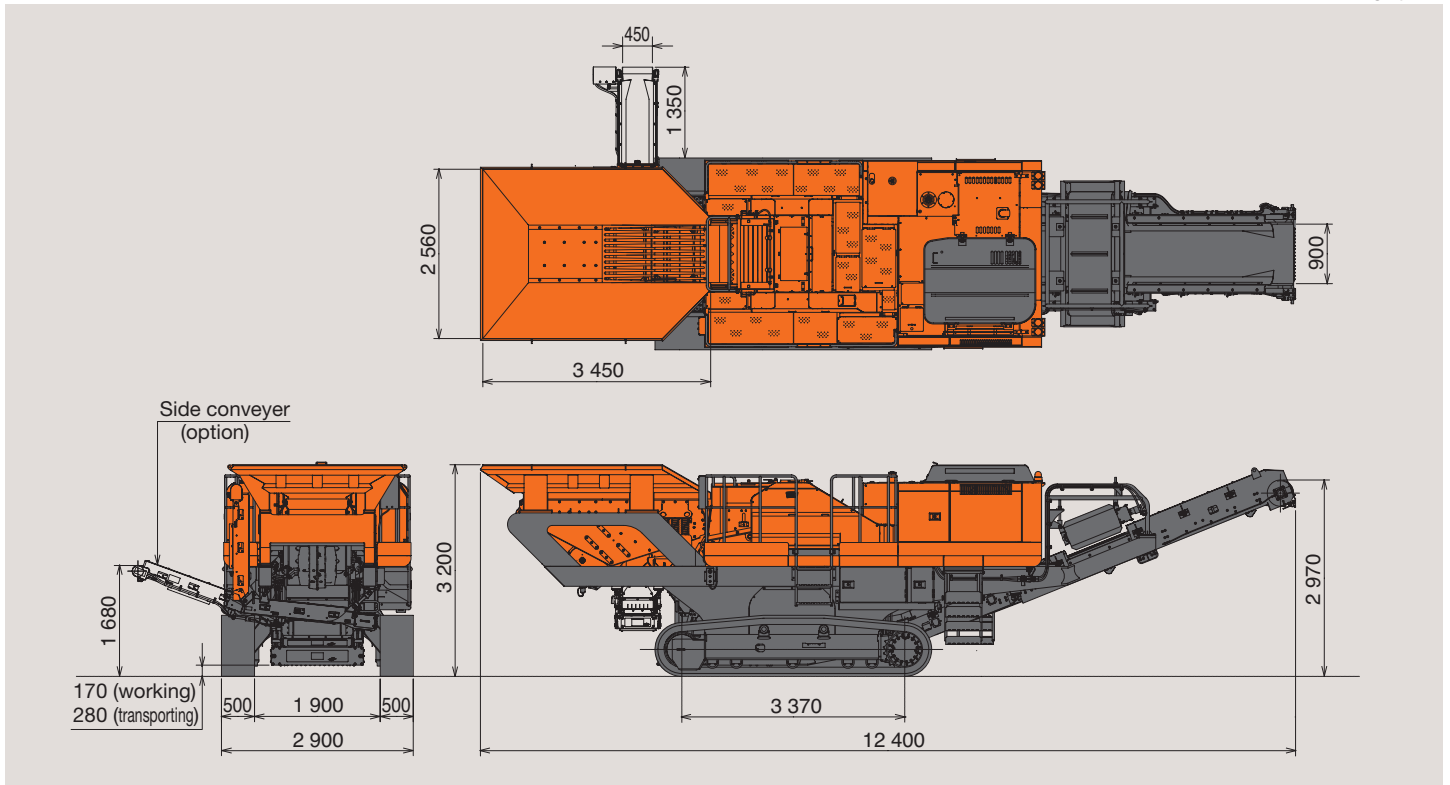
Clean Engine per New Emission Regulations

The clean engine driven ZR950JC has remarkable emission reduction, containing NOx (nitrogen oxide) and PM (particulate matter), in compliance with the global emission regulations Tier 3 and Stage IIIA.



DIMENSIONS

Unit:mm



SPECIFICATIONS

Model		ZR950JC
Operating weight (including magnetic separator)		29 800 kg
Engine	Model	Isuzu AH-4HK1X
	Type	Turbocharged, direction injection
	Rated output	140 kW / 2 100 min ⁻¹ (190 PS / 2 100 rpm)
Feeder	Model	Grizzly vibratory feeder (2 stages)
	Opening	35 mm - 50 mm
Crusher	Feed opening	930 mm x 530 mm
	Max. material size	420 mm
	Discharge outlet Concrete	25 mm to 130 mm
	Discharge outlet Soft rock*	45 mm to 130 mm
	Discharge outlet Hard rock**	60 mm to 130 mm
Travel speeds High / low		3.0 / 1.5 km/h
Gradeability		36 % (20 degree)
Refill capacity	Fuel tank	500 L
	Hydraulic tank	250 L

*with uniaxial compression strength of less than 150 MPa

**with uniaxial compression strength of 150 MPa or greater

Data is expressed in SI units, followed by reference data in () in conventional units.

OPTIONAL EQUIPMENT

Side Conveyor

Foldable with a hydraulic cylinder. Discharging to side or main conveyor is selectable by manual lever control.

These specifications are subject to change without notice.

Illustrations and photos show the standard models, and may or may not include optional equipment, accessories, and all standard equipment with some differences in color and features.

Before use, read and understand the Operator's Manual for proper operation.