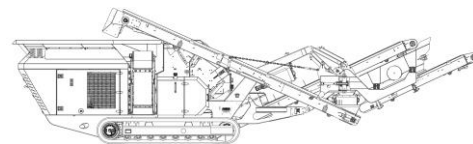


SPECIFICATIONS



McCloskey ***J3c***



DESCRIPTION

Heavy duty track mounted Crusher with following features:

- 890mm (35") wide x 500mm (20") Jaw Crusher.
- 218Hp (162kW) Volvo D5 T3 or T4 Final engine.
- Crawler Tracks.
- Integrated hydraulic folding stockpiling conveyors.
- I-beam plate fabricated chassis construction.
- Open chassis design for ease of maintenance.
- Fast setup time.
- Double Deck recirculation screen.
- Swing out radial return conveyor.

DIMENSIONS AND WEIGHTS

Length - transport	14.021m (46')
Width - transport	2.55m (8' – 4")
Height - transport	3.056m (10')
Weight – (estimated)	26,200 Kgs (54,761lbs) inc magnet & dirt conveyor

CAPACITIES

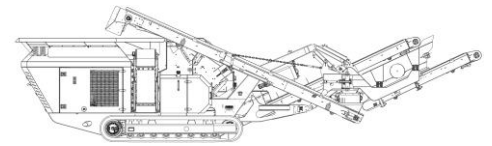
Diesel tank capacity	280L (74 US gal)
Hydraulic tank capacity	350 L (92.5 US gal)

CRUSHING CHAMBER

Feed opening	890 x 500mm, (35" x 20")
Crusher speed	300 rpm
Crusher Drive	Hydraulic – Banded V-Belts
Min. opening	40mm (1.6") *Note Applications
Max. opening	110mm (4.3")
Jaw weight	7,943kg (17,511 lbs)
Closed side setting adjustment	Hydraulic ram wedge adjust
Motor	Kawasaki axial piston 195cc/rev
Flow rate	234 Lpm (61.8 US Gpm)
Level sensor	Ultrasonic
Load sensor	Hydraulic
Feed opening	890 x 500mm, (35" x 20")

PAN FEEDER

Feeder width	800mm (31.5")
Feeder length	3750mm (147.6")
Hopper width	2000mm (78.7")
Hopper length	4215mm (166")
Drive	Hydraulic
Grizzly section opening	Tapered 30-50mm or 45-65mm
Grizzly section length	1080mm (42.5")
Motor	Turolla 42.9cc/rev
Flow rate	Up to 62 Lpm (16.4 US gpm)
Adjustable speed	Yes – via mechanical Flow Control
Maximum speed	970rpm
Volume	2.75m ³ (3.6yd ³)



SIDE CONVEYOR

Stockpile height	2583mm (8' – 6")
Belt width	500mm (20")
Belt spec	Plain - 400/3 3+1.5
Drive drum dia.	254.5mm (10")
Tail drum dia.	220mm (8.6") - spoked
Motor	OMS315
Flow rate	Up to 43.8 Lpm (11.5 US gpm)
Adjustable speed	YES
Maximum speed	Up to 139 rpm

MAIN CONVEYOR

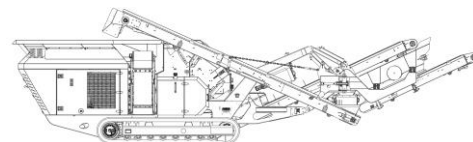
Stockpile height	3006mm (9' – 10")
Belt width	900mm (36")
Belt spec	Plain - 630/2 9+3 straight warp
Drive drum dia.	256.5mm (10")
Tail drum dia.	220mm (8.6") – spoked
Motor	OMS500
Flow rate	Up to 62 Lpm (16.4 US gpm)
Maximum speed	Up to 124 rpm
Angle adjustable	YES (when recirc removed)

FINES CONVEYOR

Stockpile height	3015mm (9' – 11")
Belt width	900mm (36")
Belt spec	Plain - 500/3 8+2
Drive drum dia.	256.5mm (10")
Tail drum dia.	208mm (8") - spoked
Motor	OMS400
Flow rate	Up to 50.8 Lpm (13.4 US gpm)
Maximum speed	Up to 114 rpm

SCREENBOX

Dimensions - top deck	2000mm x 1100mm (6'-7" x 3'-7")
Bearing type	SKF 22215
Screens - top deck	6'-7" x 3'-7" end tension - 1 off
Screen angle	25°
Screen motor	Turolla (38.6cc/rev)
Drive system	Direct drive with HRC130 coupling
Hydraulic flowrate	Up to 50.8 Lpm (13.4 US gpm)
Speed adjustable	YES - Pressure compensated FCV
Screen stroke adjustable	8mm
Screen shaft speed	970 rpm
Screen 'g' force	5.05

**TOP DECK TRANSFER CONVEYOR**

Belt width	500mm (20")
Belt spec	Plain 400/3 4+2
Drive drum dia.	193.7mm (7.6")
Tail drum dia.	193.7mm (7.6")
Motor	OMH500
Flow rate	Up to 45 Lpm (11.9 US gpm)
Adjustable speed	YES
Maximum speed	Up to 113 rpm

RETURN CONVEYOR

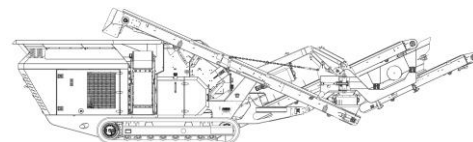
Belt width	400mm (16")
Belt spec	Chevron - 400/3 6+1.5
Drive drum dia.	254.5mm (10")
Tail drum dia. (Spoked)	193.7mm (7.6")
Motor	OMS315
Flow rate	Up to 45 Lpm (11.9 US gpm)
Adjustable speed	YES
Maximum speed	Up to 128 rpm
Radial angle	0 to 180 degrees

POWERUNIT AND HYDRAULICS

Engine	Volvo D5 Tier 4 Final or Tier 3
Engine power	162 Kw (218 HP)
Engine speed	1800 rpm
Crusher Pump	Kawasaki K8V125 closed loop.
Flywheel Pump	Turolla 31.8/31.8/22.5
Total system flow (max)	525.6 Lpm (138.8 US Gpm)
Hydraulic tank capacity	350 L (92.5 US gal)
Hydraulic tank ratio	0.82: 1
Hydraulic Oil cooler	YES – 2 OFF
Engine	Volvo D5 Tier 4 Final or Tier 3

MAGNET

Belt width	559mm (22")
Drive drum dia.	320mm (12.6")
Tail drum dia.	320mm (12.6")
Motor	OMH400
Flow rate	Up to 43.8 Lpm (11.5 US gpm)
Reversible	YES
Twin Pole	YES



ELECTRICS

Emergency stops	4 off, 1 powerunit, 1 chamber, 2 chassis
Start Siren	YES – 10 sec delay
Control panel	Tedd Engineering / IFM
Engine shutdowns:	Low oil pressure High water temp Air filter blockage (selectable) Fuel contamination Low hydraulic tank level High hydraulic oil temperature
Radio control tracks and feeder	STANDARD
Pendant track control	YES – plugged in control cabinet

TRACKS

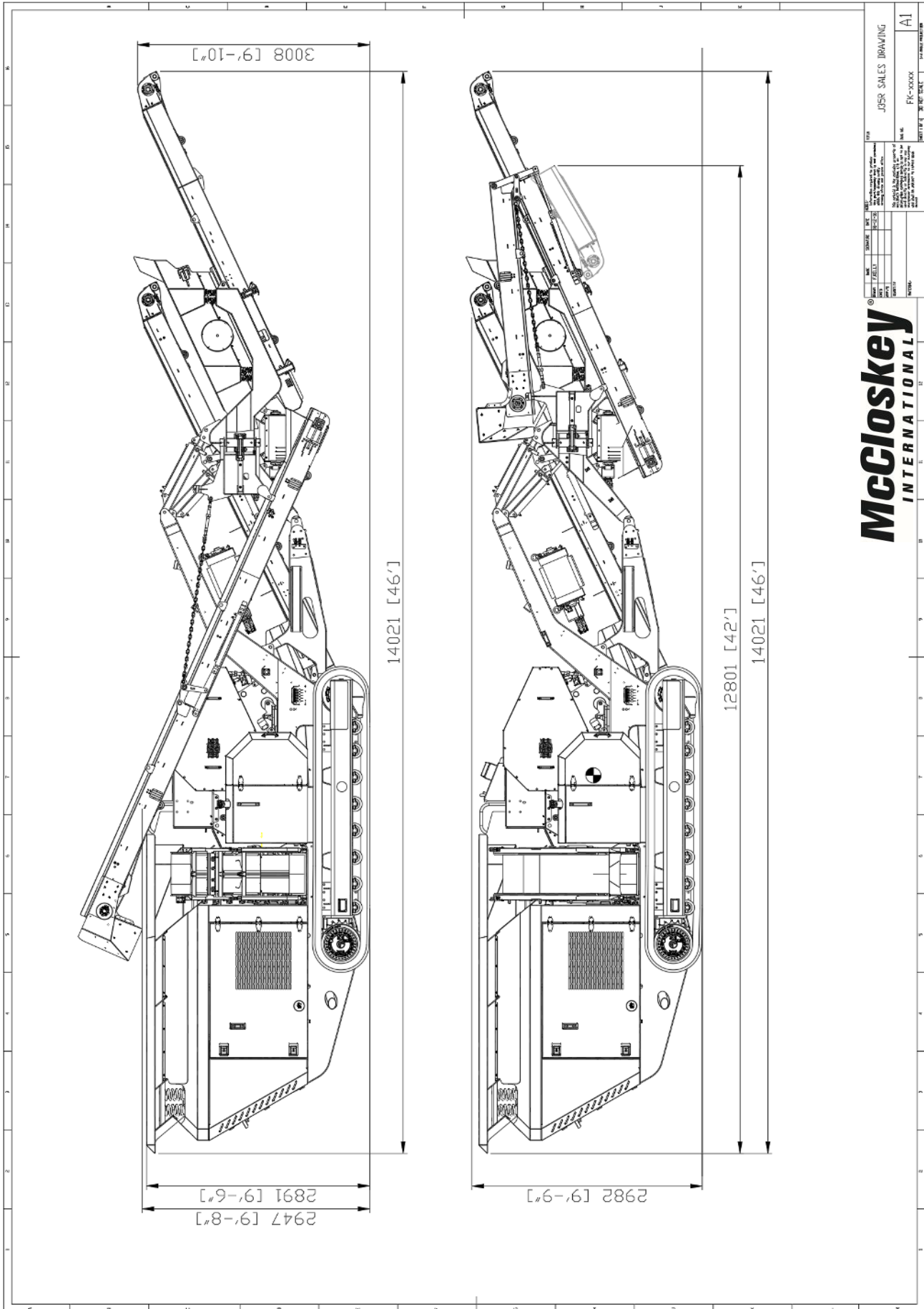
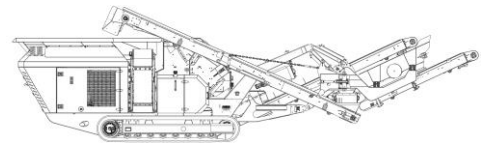
Width	400mm (15.7")
Length	3240mm (10' – 8") crs
Height	738mm (29")
Gearbox	Bonfiglioli 709
Ratio	147:1
Motor	MAG 85VP
Speed max	1 Kph (0.62 Mph)
Flow rate	124 Lpm (32.7 US gpm) 3 speeds, selectable on remote control
Multiple speeds	control
Creep tracking when crushing	Yes, activate from remote control
Attachment to chassis	Bolt On for quick change

OPTIONS

- Main conveyor variable speed control
- Overband magnet
- Water Pump and dust suppression system
- Various jaw die pattern options
- Work lights
- Refueling pump
- Jaw deflector plate
- Grizzly blanking plate
- Feeder punch plate

SAFETY FEATURES

- External belt alignment points
- External grease points
- Engine safety shutdown systems
- Full safety guarding for nip points



McCloskey®
INTERNATIONAL

J3c		J3c SALES DRAWING	AI
DATE	DRAWN BY	REVISED BY	DATE
ALL DIMENSIONS ARE IN INCHES UNLESS OTHERWISE SPECIFIED. DIMENSIONS IN PARENTHESES ARE METRIC EQUIVALENTS. THIS DRAWING IS THE PROPERTY OF MCCLOSKEY INTERNATIONAL. IT IS TO BE USED ONLY FOR THE PROJECT AND MACHINE SPECIFICALLY IDENTIFIED HEREON. IT IS NOT TO BE REPRODUCED OR TRANSMITTED IN ANY FORM OR BY ANY MEANS, ELECTRONIC OR MECHANICAL, INCLUDING PHOTOCOPYING, RECORDING, OR BY ANY INFORMATION STORAGE AND RETRIEVAL SYSTEM, WITHOUT THE WRITTEN PERMISSION OF MCCLOSKEY INTERNATIONAL.			
TITLE: J3c SALES DRAWING PART NO: PIC-XXXXX		SHEET NO: 1 OF 1 TOTAL SHEETS: 1	